

MONTHLY MEMBERSHIP PROGRESS REPORT

LOCATION INDIANA

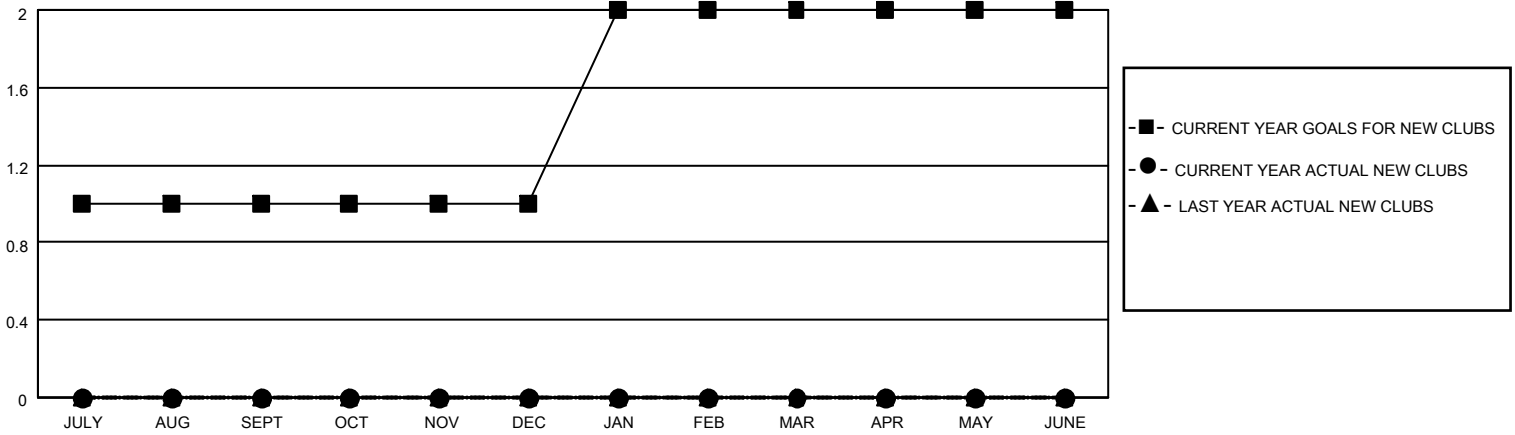
District 25 F

Results as of: 5/31/2022

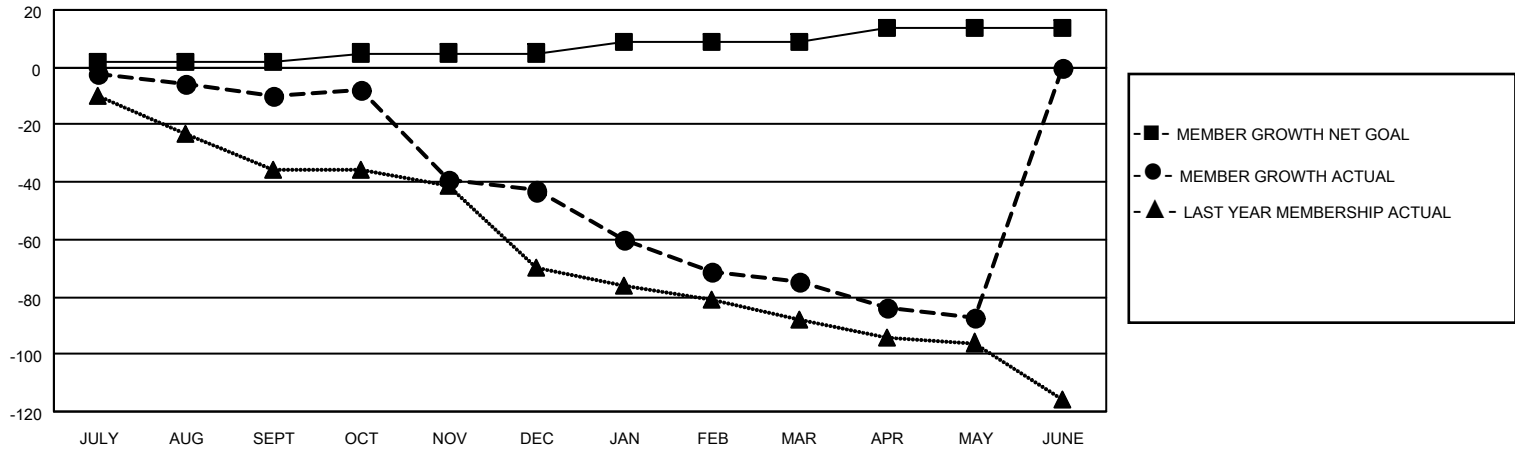
Clubs			
RESULTS FOR 2021-2022			
QUARTER	NEW CLUB GOAL	NEW CLUBS	DROPPED CLUBS
JULY/AUG/SEPT	1	0	1
OCT/NOV/DEC	0	0	1
JAN/FEB/MAR	1	0	1
APR/MAY/JUNE	0	0	0

Members			
RESULTS FOR 2021-2022			
QUARTER	MEMBER GROWTH NET GOAL	MEMBER GROWTH ACTUAL	DROPPED MEMBERS ACTUAL (including transfers)
JULY/AUG/SEPT	2	24	25
OCT/NOV/DEC	3	21	52
JAN/FEB/MAR	4	25	52
APR/MAY/JUNE	5	7	17

GOALS AND ACTUAL NEW CLUBS CUMULATIVE



GOALS AND ACTUAL MEMBERS CUMULATIVE



DROPPED CLUBS: 3	
DROPPED MEMBERS	
DECEASED	24
CLUB CANCELLED	12
OTHER	110
TOTAL	146

23 CLUBS OF 60 ADDED 1 OR MORE NEW MEMBERS

[CLICK HERE FOR CUMULATIVE MEMBERSHIP DATA](#)

<u>GENDER DISTRIBUTION</u>	
MALE	953 (71.33%)
FEMALE	383 (28.67%)
NON BINARY	0 (0.00%)
PREFER NOT TO ANSWER	0 (0.00%)
TOTAL FAMILY UNIT MEMBERS	271
FAMILY MEMBERS PAYING HALF DUES	137